

# MICHIGAN JEWISH HISTORY

# BULLETIN

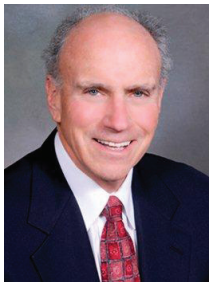


VOLUME 1 5/28/15



Judges Bernard Friedman (left) and Gerald Rosen stand in the historic "Million Dollar Courtroom," located inside of the Theodore Levin United States Courthouse in Detroit, the site of a sold-out April 2015 JHSM tour. Photograph by Arnold Collens.

## PRESIDENT'S REPORT, MICHAEL W. MADDIN



**I**T was an honor to greet JHSM members on the occasion of the Jewish Historical Society of Michigan's 56th Annual Meeting, held at the beautiful, historic Gem Theatre. This building, saved from the wrecking ball in 1997, is perfectly emblematic of our society's theme of preserving and celebrating history.

Last summer, upon commencing my term, I shared with the JHSM board a list of the "7 F's" I wanted to accomplish:

- Have **FUN** as board members and volunteers.
- **FINANCES**: Build our endowment by concentrating on larger donations and foundations in addition to

our present methodology.

- Work together as a **FAMILY**.
- **FOCUS** on the most important tasks and do them well.
- Secure a healthy **FUTURE** through strategic planning, updating our by-laws and systems, and collaborating where beneficial.
- **FINALIZE**: Bite off what we can chew and get it done, using the best people and methodology.
- Encourage volunteers to select their **FAVORITE** responsibilities.

I said then, "You don't need to see the top of the stairs to take the first step." We have made great strides toward achieving these and other goals. In December 2014, we

*Continued on page 4*

## TABLE OF CONTENTS

Volunteer of the Year award Kannon Family **2** Benefactors & Patrons of the Annual Meeting **2** Leonard N. Simons History Award **3**  
JHSM Year In Review **5** Federal Courthouse Tour **6** The Art and Early Jewish Leaders of the Labor Movement **9**  
Welcome New Members **12** Tributes **14** Memoriam **16** Heritage Council **18**

## JHSM VOLUNTEERS OF THE YEAR ELIZABETH, LESLIE, AND ANDREA KANNON

In 2011, JHSM partnered with three other community organizations to plan and present J-Cycle: A Bicycle Tour of Historic Jewish Detroit. One of those institutions, the Isaac Agree Downtown Synagogue, sent two board members to the planning meeting: Leslie and Elizabeth Kannon. Both avid cyclists, Les and Liz quickly immersed themselves in helping to plan what would become one of JHSM's most successful events. Les took on the monumental task of devising and creating a turn-by-turn route, while Liz assisted in the overall planning and execution of the

event, which now draws 200 people annually. On the day of the 2011 event, one of the group leaders could not attend and the Kannon's daughter, Andrea, also a cyclist and a City of Detroit



booster, willingly stepped in to fill the void. The trio have remained deeply involved in planning J-Cycle, and have also become invaluable assets to JHSM's growing roster of volunteers.

Liz's friendly, can-do personality, along with her ability to systematize and organize, were among the reasons JHSM hired her in 2012 as administrative assistant, a position she continues to hold. Still, she often volunteers in her spare time on behalf of the organization. Les remains involved in J-Cycle, and Andrea is not only continuing her J-Cycle leadership, but also has volunteered for other JHSM activities, including the 2014 Cruise & Schmooze fundraiser. Their deep commitment to both JHSM and the community exemplifies the true meaning and spirit of *tzedakah*.

## BENEFACTORS & PATRONS OF THE 56TH ANNUAL MEETING

### GOLD SPONSORS

Maddin, Hauser, Roth & Heller, P.C.  
Reconstructionist Congregation of Detroit

### SILVER SPONSORS

Lois & Hon. Avern Cohn  
Donna & Michael Maddin

### GEM SPONSORS

Marcia & Eugene Applebaum  
Madeleine & Mandell Berman  
Wendy Rose & Gary Bice  
Joan Braun  
Judith & Bernard Cantor  
Dorothy & Arnold Collens  
Barbara & Gerald Cook  
Gretchen & Ethan Davidson  
Cathy & James Deutchman  
Judith & Dr. Charles Domstein  
Elaine & Eugene Driker  
Peggy & Dennis Frank  
Lois & Harvey Freeman  
Barbara & Paul Goodman  
Elizabeth & Leslie Kannon  
Claire & Gordon Prussian  
Kathleen Strauss & Hon. Walter Shapero  
Suzanne & Burton Shifman  
Mary Lou Zieve

### BENEFACTORS

Marcia & Martin Baum  
Penny & Richard Blumenstein  
Jacqueline & Lawrence Elkus  
Ruth & James Grey  
Myrle & Richard Leland  
Lisa & Hannan Lis  
Cis Maisel Kellman  
Harriet & Al Saperstein  
Pam & Mike Smith

### PATRONS

Janis & Robert Ackerman  
Susan & Robert Citrin  
Ellen Cole  
Estelle & Philip Elkus  
Joy Gaines-Friedler & Moti Friedler  
Susan & Larry Gormezano  
Marla & Neil Gorosh  
Institute for Research on Labor,  
Employment and the Economy -  
University of Michigan

Lois & Robert Kaplow  
Mary Freeman & Andy Levin  
Janet & Ellsworth Levine  
Roz & Lance Mermell  
Hon. Susan Moiseev  
Joy & Allan Nachman  
David S. Newman  
Edie & Donn Resnick  
Tony Rothschild  
Roberta Russ  
Joan & Neil Satovsky  
Sheri & Charles Schiff  
Aimee Ergas & Tor Shwayder  
Ronna & Rick Silverman  
Janet & Dr. Jeffrey Weingarten

### DONOR

Margery Jablin

As of 5-16-2015

JHSM is pleased to present the *Michigan Jewish History Bulletin*, a newsletter for JHSM membership designed to share the fascinating information and research presented at JHSM's tours and programs, and to offer a colorful overview of the activities of the organization. We hope you enjoy this inaugural issue of the Michigan Jewish History Bulletin, which is also available on our website. In the coming weeks, you will receive an email with a reader survey to help us gather feedback on this new endeavor. We appreciate your participation in that survey.

### *Michigan Jewish History Bulletin*

Michael W. Maddin, *President*  
Wendy Rose Bice, *Executive Director*  
*Contributors:* Barbara Lewis, Aimee Ergas, Mike Smith  
*Editors:* Deborah Logan and Marilyn Krainen  
*Graphic Designer:* Laurie Blume

Published by the Jewish Historical Society of Michigan  
6600 W. Maple Rd., West Bloomfield MI 48322  
248-432-5517  
[www.michjewishhistory.org](http://www.michjewishhistory.org)

# LEONARD N. SIMONS HISTORY AWARD 2015: CARL LEVIN



**T**HE prestigious Leonard N. Simons History Award, first established in 1991, honors those who have made outstanding contributions to the enrichment, preservation, and dissemination of Michigan Jewish history. Presented by the Jewish Historical Society of Michigan,

the award supports the organization's mission to educate, celebrate, and promote awareness of outstanding Jews of Michigan. Like previous honorees, Senator Carl Levin has a deep interest in and has made important contributions to furthering the mission of JHSM and has participated in many programs and initiatives that have had far-reaching impact.

Throughout his forty-five-year career of distinguished service, Levin has played a prominent role in telling Michigan's Jewish story. He has long been a friend of JHSM, a connection dating back to October 1977, when, as president of Detroit's Common Council, he helped JHSM dedicate a historical marker at the site of Michigan's first Jewish religious services in Detroit. Two years later, as Michigan's first Jewish U.S. senator, Levin was the featured guest speaker at the 20th Annual Meeting of the Jewish Historical Society of Michigan. His demonstrated stewardship of Michigan's Jewish story includes the adventurous rescue of a rare 1920s stained-glass window from the former Mogan Abraham Synagogue on Farnsworth in Detroit, and his appearance in the locally

produced documentary, "Detroit Remember When: The Jewish Community." Both Carl Levin and his brother, U.S. Congressman Sander Levin, were featured in the highly acclaimed documentary, "The Life and Times of Hank Greenberg," by Aviva Kempner.

Levin is a frequent guest at JHSM events, including the 2007 dedication of the Chapman Abraham/Jewish Soldiers in the Civil War historical marker in Milliken State Park and the J-Cycle bicycle tour. His preface for the children's activity book, *Early Jewish Days in Michigan*, published by the Reconstructionist Congregation of Detroit (RCD), a congregation he helped to establish in 1960, is a testament

to the value he places on preserving our Jewish history.



*In 1960, Levin and a small group of friends established the Reconstructionist Congregation of Detroit to help maintain a family-friendly Jewish place of worship in Detroit. A few years later, Levin, who then was a member of the Detroit City Council, spotted this stained-glass window on the back of a truck, which had been removed from the Mogan Abraham building on Farnsworth. Headed for destruction, Levin intervened and negotiated its rescue. The window is now in the loving care of the Reconstructionist Congregation of Detroit.*

## THE LEONARD N. SIMON HISTORY AWARD PAST HONOREES

1991	PHILIP SLOMOVITZ*	1999	MICHAEL W. MADDIN	2007	SHARON L. ALTERMAN
1992	AVERN L. COHN	2000	ALAN D. KANDEL*	2008	GEORGE M. ZELTZER*
1993	GEORGE M. STUTZ*	2001	SIDNEY M. BOLKOSKY*	2009	MANDELL L. BERMAN
1994	IRWIN SHAW*	2002	ADELE W. STALLER	2010	JAMES D. GREY
1995	EMMA LAZAROFF SCHAVER*	2003	MATILDA BRANDWINE*	2011	CHARLOTTE M. DUBIN
1996	LESLIE S. HOUGH, PHILIP P. MASON	2004	SUSIE CITRIN	2012	MICHAEL O. SMITH
1997	MARY LOU SIMONS ZIEVE	2005	EDITH L. RESNICK	2013	IRWIN J. COHEN
1998	JUDITH LEVIN CANTOR	2006	GERALD S. COOK	2014	A. ALFRED TAUBMAN*

*\*Of Blessed Memory*



More than 200 enjoyed JHSM's summer 2014 event, *Cruise & Schmooze: A Detroit River Cruise*, which successfully combined historical programming with fundraising. Slipstream Theatre Initiative's acting corps provided re-enactors for the event. Here, a young protégé of Phil Slomovitz enchants JHSM member Bea Rowe.

celebrated 1,000 JHSM members! This year, we would like to increase that number by ten to fifteen percent, an easily accomplished goal with the ambassadorship of our current members.

JHSM continues to present thoughtful, inspirational, educational events that celebrate and share Michigan's Jewish history. Last summer's Cruise and Schmooze Detroit River Cruise is one example, as are our ongoing tour programs which bring history to life for hundreds each year. Families and organizations continue to retain JHSM to conduct customized, private tours of historic Jewish Detroit. In addition, our team planned four tremendously successful explorations: the sold-out Charles Agree Architectural Tour, a tour of Southwest Detroit and the Downriver communities, our members-only Federal Courthouse Tour, and the Art and Jewish Leaders of the Early Labor Movement Tour.

In 2015, we saw the creation of the JHSM Jewish History Curriculum, which encompasses our youth-education programs: the Settlers to Citizens bus tours of historic Jewish Detroit, and an in-class curriculum, The Traveling Trunk. A grant from the Hermelin/Davidson Center for Congregation Excellence enabled us to retain the services of Dr. Cheryl Blau to write and teach the in-class curriculum, which examines the organizations, people, and events that shaped our state's Jewish history. The program was presented to 325 students from eleven religious schools. Congratulations to the team that worked diligently to create this masterpiece, including Ruthe Goldstein

and Jeannie Weiner, our Youth Tour chairpersons.

It is also with pride that I have witnessed the publication of the fall 2014 edition of *Michigan Jewish History*, our largest journal to date, and of *Michigan Women Who Made a Difference*, a new book exploring the contributions of more than 125 Detroit-area women who helped to shape our Jewish community. Congratulations to author Aimee Ergas.

As we look ahead, our thoughts go to models of presenting information in personal and meaningful ways. Our Speaker's Bureau will engage and train volunteers to present JHSM's virtual tours of historic Jewish Detroit and Michigan. Initially created to reach those unable to take a bus tour, these presentations are now being expanded as a vehicle for us to engage and collaborate with other organizations and communities who might not otherwise hold a bus tour. In addition to our initial presentation, our chairperson Margery Jablin and her team are creating a Synagogues of Michigan tour and a Northwest Detroit tour.



The Strategic Planning Committee. Standing (l to r): Chuck Domstein, Aimee Ergas, Sheldon Cohn, Jennifer Boardman, Jacqui Elkus, Sid Simon, Jeannie Weiner, Stan Meretsky, Risha Ring. Seated (l to r): Liz Kannon, Michael Maddin, Wendy Bice. Not pictured: Ruthe Goldstein.

I'm also pleased to announce the creation of JHSM's mini-documentary, "Life on Hastings Street," an eight-minute film, produced in partnership with the Jewish Community Archives and funded by the David-Horodoker Organization. The story resonates with every generation and every community, for it is the tale of how disparate groups of immigrants and settlers became citizens.

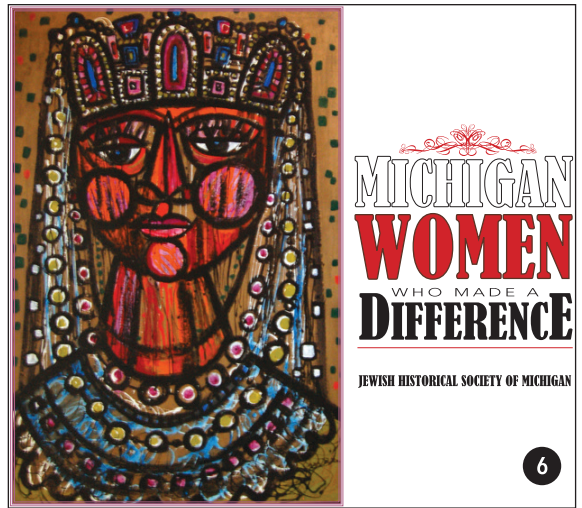
We have also accomplished the tasks of updating our by-laws and modernizing our budget and accounting systems. Perhaps our most important endeavor in the last twelve months, however, was the process of creating a strategic plan which will be formally adopted this

*President's Report, continued on page 19*

# JHSM Year On Review

HUNDREDS OF PARTICIPANTS LEARN MICHIGAN'S JEWISH HISTORY BY ATTENDING AND PARTICIPATING IN JHSM'S PROGRAMS THROUGHOUT THE YEAR.

**1 4** The JHSM Jewish History Curriculum brings education to the classroom and the streets through the Settlers to Citizen's Bus Tours and the Traveling Trunk classroom lessons.



**5** J-Cycle, a bicycle tour of historic Jewish Detroit attracts more than 200 annually. In 2014, Harriet and Al Saperstein, dressed as Chapman Abraham and Mademoiselle greeted riders along the Dequindre Cut. J-Cycle 5 is August 16.

**2** The March 2015 American Foodways lecture, co-presented by the Henry and Delia Meyers Library and the National Council of Jewish Women included a Cookbook Show & Tell. Debra Golden-Steinman, Flint, shares her rare 1924 Settlement Cookbook.

**3** The second class of Memoir Writing Workshop graduates include (standing l to r): Joel Bussell, Susan Moiseev, instructor Joy Gaines Friedler, Brenda Zales and Zieva Konvisser; (seated) Suzi MacWilliams and Phyllis Schwartz.

**6** In February 2015, JHSM published Michigan Women Who Made a Difference, written by JHSM research director Aimee Ergas. The book shares the biographies of Detroit-area women who helped shape our community. The book was made possible by a Jewish Women's Foundation grant.

**7** Bus tours continue to explore our communities, such as the October 2014 tour of Southwest Detroit and Downriver communities which included a visit to Beth Isaac Synagogue in Trenton.



# THE THEODORE LEVIN UNITED STATES COURTHOUSE

BY BARBARA LEWIS, WENDY BICE



*Tour participants encircle Judge Friedman's bench.*

*The sixty JHSM members who participated in the April 16, 2015, tour of the Theodore Levin United States*

*Courthouse in Detroit were hard-pressed to say what impressed them most: the warm and personal reception they received from Judge Bernard Friedman, who served as tour guide, or the jaw-dropping splendor of the "Million Dollar Courtroom." Chief Justice Gerald Rosen referred to the hallowed chambers over which he presides as "a hidden gem in Detroit."*

*Judith Christie, courthouse historian, led the visitors through the court building, located on Lafayette Street in downtown Detroit. Participants toured Judge Friedman's chambers and the courthouse museum, a small display on the first floor in what was originally a post office. The museum has photos, newspaper clippings, and artifacts from notable cases that were heard in the building. Judge Avern Cohn, age 90 and still at work every day, spoke to the group over lunch about his perspectives on Judaism and the law. Judge Paul D. Borman also greeted the visitors.*

**THE** federal court system, established by Article 3 of the U.S. Constitution, includes a provision that federal district court judges are to be nominated by the president and confirmed by the U.S. Senate. At present, the Eastern District U.S. Federal Court, located in Detroit, has 24 senior judges, nine of whom are Jewish. They are Chief Judge Gerald Rosen, Paul D. Borman, Avern Cohn, Bernard Friedman, Mark A. Goldsmith, Matthew Leitman, Judith Levy, Laurie Michelson, and Arthur Tarnow. They hear both civil and criminal cases.

Originally a federal building, housing federal offices as well as courts, the U.S. District Courthouse (which later became the Theodore Levin United States Courthouse) opened in 1932 as a Public Works Administration project. The Art Deco-style building replaced a smaller 1890s federal building on the same site.

Lined and decorated with 30 different types of marble imported from across the world, the 1890s courtroom's estimated value in 1931 was \$1,000,000. As demolition plans for the old building took shape, Chief Judge Arthur J. Tuttle appealed to the U.S. Treasury Department to save the courtroom from destruction. He recognized its architectural significance and its beauty. Newspapers quickly dubbed it the "Million Dollar Courtroom."

Architects took the room apart piece by piece, carefully labeling each panel and block so it could be accurately reassembled in the new building, which opened in 1933. Only the floor is different; originally covered with mosaics, it is now carpeted. No photos of the original floor exist, said Judith Christie, so no one has been able to recreate it.

The courtroom is full of symbols and works of art:

- Two pillars with lions holding up a globe symbolize the strength of the court system.

- A mason's plumb-bob on the wall over the judge's chair indicates the rectitude of the law.
- A dagger through an unction pot at the back of the room, located where the judge would see it as he passed sentence, shows that justice must be tempered by mercy.
- A carving of a shield with a woman's head and upraised arms symbolize the biblical Deborah, the first female judge.
- A portrait of Judge Tuttle hangs prominently on one of the courtroom walls. Portraits of other chief judges are in rotating display, six at a time.

The historical courtroom serves primarily as the chief judge's courtroom, because many chief judges – who can choose any courtroom in the building – have chosen this one. Some chief judges prefer larger courtrooms and larger chambers. Chief judges serve for seven years, after which the office passes to the next most senior judge.



Judge Friedman stands in the center of the historic courtroom. The courthouse, located between Fort Street and Lafayette Boulevard, and Shelby Street and Washington Boulevard, was added to the National Register of Historic Places in December 2009.

## WHO WAS THEODORE LEVIN?

Theodore Levin, the oldest of eight children, graduated from the University of Detroit Law School in 1920 with a bachelor of laws degree and earned a master of laws degree in 1924. He became a federal judge in 1946, appointed by President Harry S. Truman. In 1959, he was named chief judge of the Eastern District, a position he held until 1967. During those years, the highly praised and regarded judge presided over cases in the Million Dollar Courtroom.

In 1994, John Dingell spearheaded the effort to pass a congressional act, approved by the president, to rededicate the building in honor of Judge Levin. Dingell cited numerous reasons for the dedication, including Levin's able administrative abilities, his leadership and innovation in criminal sentencing, and his talent for



Judge Theodore Levin, 1897-1970

resolving difficult cases with "practical and often unorthodox solutions."

The Million Dollar Courtroom has been the scene of many important cases, including Aaron Sapiro's libel suit against Henry Ford. Sapiro, a Jewish attorney who was involved in organizing agricultural

workers, was upset about remarks Ford made in his newspaper, *The Dearborn Independent*. Ford accused Sapiro and the farmers' organizations he represented as being involved in a "Jewish front" that was attempting to take over American agriculture. The trial made quiet history, as Ford's band of attorneys worked to keep the story out of the public's eye. Later, Ford apologized for his remarks, and the case was settled out of court.

More recently, the courtroom has been the site where Judge Gerald Rosen was sworn in as a judge – and where he and his wife were married. During a 2009 visit, U.S. Supreme Court Chief Justice John Roberts said it was one of the finest and most beautiful courtrooms he'd seen. The courtroom was also where the Kwame Kilpatrick criminal trial and the Detroit bankruptcy case were held.

## JUDAISM AND JUDGING

Judge Avern Cohn shared his reflections on whether being Jewish has affected his decisions as a judge.

Cohn, a longtime supporter of the Jewish Historical Society of Michigan, was born in Detroit on July 23, 1924, to Irwin I. and Sadie Levin Cohn. He attended the University of Michigan, John Tarleton Agricultural College, Stanford University, and Loyola School of Medicine. He served in the

United States Army from 1943 to 1946 and received his juris doctor from the University of Michigan Law School in 1949. Cohn was admitted to the Michigan State Bar in December 1949 and was appointed United States District Court Judge for the Eastern District of Michigan by President Jimmy Carter on September 26, 1979. In the years since, he has presided over many cases of historic significance and has been involved with numerous Jewish institutions. The recipient of multitudinous honors, Cohn was recently named one of Detroit's 'Eight Over Eighty' by Jewish Senior Life.



*Judge Bernard Friedman, Judge Avern Cohn, and JHSM president Michael Maddin*

In reflecting on how his Jewish values and upbringing have affected his judicial decisions, Cohn began by saying, "The answer is not easy to come by. Since I have never not been Jewish, I have nothing with which to compare my decision-making.... Being Jewish does not always mean you come out the same way or have the same value system. I know there is no baseline of religious observance or training or of ethnic self-consciousness from which to make a judgment about Jewishness and judging.

"Judges of my generation and before come from a background of people who struggled for security in a sometimes hostile world. We shared the struggles with other minorities. Exploring the qualities that most Jewish judges of my generation share, and which factors in their judicial make-up come from their Jewish heritage, requires that I be careful: Many non-Jewish judges share these qualities; qualities also shared by the Jewish justices of the Supreme Court of the United States: Brandeis, Cardozo, Goldberg, Fortas, Ginsburg, Breyer, Kagan, and sometimes Frankfurter. They are qualities reflected in both the decisions in which they were in a majority, and in which they were dissenters.

- Approach to the role of the judge: a refusal to adhere to a mechanical jurisprudence; skeptical of the

permanence of precedent; a recognition of the need for the law to change.

- Sensitivity to civil liberties.
- Attempts to promote social justice.
- Compassion for the poor and less-fortunate.
- Refusal to become entangled with legal fictions to the detriment of doing the fair and right thing.
- Knowledge that concepts of liberty, equality, and due process are not static but fluid, changing with the times and new conditions.
- Concern for the other fellow.

"We see these qualities come together when we look at the judicial career and a 1903 decision of the first Jewish federal judge, Jacob Trieber of Helena, Arkansas. Trieber, appointed as a district judge by President McKinley on July 26, 1900, shows evidence of Jewish factors in decision-making in a case involving a group of "white cappers" charged with intimidating Blacks, trying to drive them from their jobs, a violation of an 1866 law. Trieber refused to dismiss the charge by giving a broad reading to the statute. He said its purpose "was to prohibit unjust discrimination against Negroes." In 1903 it was an extraordinary holding. In 1906, the Supreme Court, in a companion case, reversed him saying that help for the victims had to be found in state law.

"Not until 1960 was that view of the limitations of the 1866 law rejected. After reading a biographical account of Trieber's life and work, I am convinced that the factors listed above were at work in his 1903 decision.

"As I look back at my 36 years as a federal judge, preceded by 31 years as a lawyer, I am satisfied that when I have a choice to make, when the decision before me is resolved by my exercise of discretion, that is, the choice is up to me, more often than not, my 90 years as a Jew (85 of which I have memory of) play a significant role. And for that I get great satisfaction."

*Photographs by Arnold Collens*





# THE ART AND EARLY JEWISH LEADERS OF THE DETROIT LABOR MOVEMENT

BY AIMEE ERGAS, JHSM RESEARCH DIRECTOR

*It is no secret that the Diego Rivera murals at the Detroit Institute of Art are a world-class treasure, but when a DIA docent shares details of the nuances within those murals, the art takes on new life. So it was for the 65 guests who spent the afternoon of April 30 with the JHSM on the “Art and Early Jewish Leaders of the Detroit Labor Movement Roving Symposium.” Other stops on the Roving Symposium included the Walter P. Reuther Library of Labor and Urban Affairs at Wayne State University, and the UAW’s headquarters, Solidarity House.*



*Diego Rivera worked in Detroit on the Detroit Industry Murals at the DIA during this period of unrest, arriving in the city shortly after the Ford Hunger March. A Marxist and strong supporter of workers' rights, his DIA murals depict his respect for and empathy with factory workers.  
Detroit Industry, north wall (detail), Diego Rivera, 1932-33, fresco. Detroit Institute of Arts*

**SINCE** the dawn of the labor movement in the United States, the American Jewish community has advocated for worker and union rights. Ancient Jewish writings place a high value on social justice and worker rights, biblical commandments stress the value of work, and the Talmud demands respect for the dignity of labor.

*“Six days thou shalt do work” - Exodus 23:12*

Leviticus 19:9, 10 commands landowners to share their bounty and to leave the gleanings from the corners of their fields for the poor.

*“Thou shalt not oppress a hired servant that is poor and needy....*

*In the same day thou shalt give him his hire....” - Deuteronomy 24:14, 15*

The mass migration of Jews to the U.S. from Eastern Europe and Russia in the late 19th-early 20th century was made up predominantly of working-class individuals who toiled in trades such as the garment industry, and, particularly in Detroit, in the cigar-making and laundry industries. Left-wing social values made the labor movement a comfortable place for many Jewish workers and activists. During the Depression era, when Socialism was a utopian idea, union membership dwindled but was still the voice that led



*The Walter P. Reuther Library of Labor and Urban Affairs, the largest labor archives in North America, collects and preserves original-source materials relating to the development of the American labor movement, the political and community life of metropolitan Detroit, the civil rights movement, and women's struggles in the workplace. The Reuther Library is the home of the Leonard N. Simons Jewish Community Archives. The 1975 building is also home to many important works of labor-related art.*

the fight for work-hours limitations, sick leave, and other benefits. Most union members belonged to skilled craft unions and were affiliated with the American Federation of Labor (AFL).

A few names from the early Detroit labor scene:

- **Sam Goldwater** was head of the Cigarmakers Union in 1887 and then president of the Detroit Trades Council. He was elected a Detroit alderman in 1894.
- Around the turn of the century the all-Jewish Local 4 of the United Cloth, Hat and Capmakers of North America was formed in Detroit. **Lazarus Goldberg** headed the Cutters Union.
- **Isaac Litwack**, a Russian immigrant, organized the Jewish Laundry Drivers Union and then the Teamsters Linen and Laundry Drivers, Local 285, and **Joseph Katz** organized the Jewish Local 1512 of the United Brotherhood of Carpenters.
- In June 1913, at a large rally in Detroit, during the first major auto-workers strike, speeches were given in English, Russian, German, and Yiddish. **Matilda Robbins** was an organizer of that and many other strikes nationally.

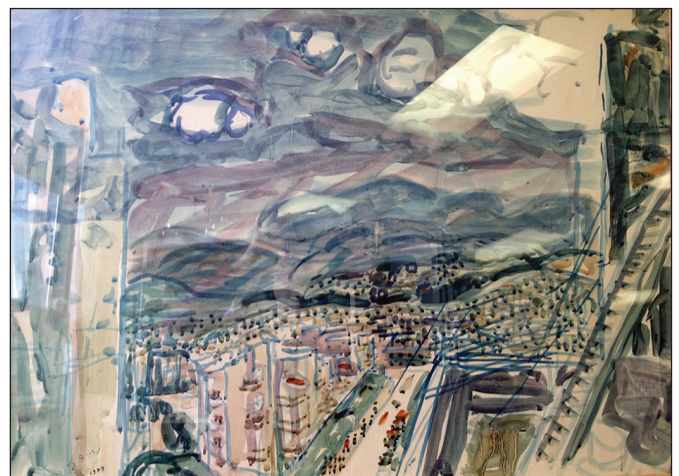
## DETROIT IN THE 1930S

As the Depression worsened, organized strikes – sometimes with grim consequences – became important organizing tools. In March 1932, workers at the Ford plant in Dearborn staged a demonstration demanding jobs. The Ford Hunger March, in which three thousand workers protested, left five dead. Later, the Levin Glove Company and Bernard Schwartz Cigar Company became targets of strikes. The Roosevelt Administration's National Industrial Recovery Act (1933) provided for collective bargaining, and in 1935, the National

Labor Relations Act (also known as the Wagner Act) required businesses to bargain in good faith with any union supported by the majority of its employees.

The Jewish Emergency Relief Fund was established in Detroit during this time, and the Workmen's Circle set up a soup line. **Dr. Shmarya Kleinman** provided medical services for the unemployed. The Jewish Labor Committee-Michigan Region, established in 1934, worked with the trade-union movement to ease immigration restrictions, especially as Jews tried to escape the Nazis in Europe. After the war it organized relief and resettlement for displaced persons and supported the establishment of Israel. The papers of the Jewish Labor Committee are preserved as a part of the Reuther Library collections.

One of the most important organizers of the 1930s was **Myra Wolfgang**, who graduated from Northern High School in 1931 and almost immediately got involved with the Hotel and Restaurant Workers. By twenty-three, she was organizing workers and leading strikes. Her most famous action occurred in 1937 when she walked into the Woolworth's at Woodward and Grand River and blew a whistle, a pre-arranged signal for the women counter workers to begin a sit-down strike that lasted eight days. Wolfgang's contemporaries included **Dorothy Rogin Krause**, who participated in several UAW strikes in Detroit and Flint by organizing



*In 1961, Walter Reuther visited Israel as the guest of Histadrut, Israel's labor movement. He was given a watercolor painting by Josef Zaritsky, a very prominent Israeli artist. That painting is at the Reuther Library today.*

strike kitchens and forming the UAW Women's Auxiliary, and **Rose Parker Kleinman**, who worked to promote low-income and open-housing policies.

## THE LABOR MOVEMENT AND ISRAEL

Early in the movement, American labor leaders purchased land in pre-Israel for American workers, built trade schools, and lobbied the British to lift barriers. Jewish labor leaders agitated on behalf of Israel's establishment, and the AFL and CIO constructed housing and cultural centers in Israel after 1948. Walter Reuther, who became UAW president in 1936, had important connections there as well. His correspondence at the Reuther Library includes letters from Israeli leaders such as Golda Meir and David Ben-Gurion. According to some sources, at one point in the 1960s, the UAW was the largest institutional purchaser of Israel bonds.



*In 1951, UAW headquarters relocated to the Solidarity House, located on East Jefferson Avenue in Detroit. Renowned architect Oskar Stonorov designed both the building and this statue, which Walter Reuther dubbed "The Builder."  
Photos by Elayne Gross.*

## JEWISH LEADERSHIP IN EARLY UAW HISTORY

The United Automobile Workers of America (UAW) is the largest union in the automotive industry. In 1978, membership was 1.5 million; today it's about 400,000. Still, the UAW remains one of the most powerful and influential unions in the United States. But it wasn't always so.

The UAW was born in 1935 in the midst of the Great Depression, the heyday of union, industry-wide organizing (as opposed to the earlier trends of organizing craft unions which were based upon skills like shoe-making or cigar rolling). In 1936, the UAW affiliated with the new Congress of Industrial

Organizations. Even with some 25,000 members, the UAW's future was shaky. The Flint Sit Down Strike of 1937, where UAW members sat down on the job and refused to vacate GM's Fisher Body #2 in Flint, Michigan, changed the future of the struggling union. After forty-four days, GM recognized the UAW as the representative of its autoworkers. Chrysler followed suit a few months later, and Ford in 1941. By World War II, the UAW had more than one million members. The union has been an integral part of the auto industry ever since, as well as a voice for women's rights, civil rights, and many other human causes.

From the beginning, Jews have worked in the auto industry, on its factory floor, in car dealerships, in gas stations, and in thousands of other related businesses. They have been members and leaders of the UAW: **Irv Bluestone**, **Sam Fishman**, and **Nat Weinberg** are but three examples. Bluestone was universally recognized as an important labor intellectual, and he rose to be a UAW vice president and head of the union's GM department. Sam Fishman began his career as a Ford Motor Company line worker and eventually rose to president of UAW Local 36 at the Ford Assembly Plant and would serve as head of the UAW Community Action Program (CAP). Nat Weinberg, a leader during the union's formative years, became the union's top researcher and bargainer for many years.



*Randie Levin, Cathy Deutchman, and Charlene Handleman examine a sculpture by Irving Berg, on display at the Walter P. Reuther Library on the campus of Wayne State University. Photo by Elayne Gross*

# JHSM

*Welcomes These New Members*

## CHRONICLERS

Shari & Stanley Finsilver  
Amy & Mark Haimann  
Judith & Dr. Martin Herman  
Gail & Donald Lansky  
Jennifer & Louis Sobol

## SCRIBES

Janis & Robert Ackerman  
Linda & Michael Berke  
Millicent R. Berry  
Daniel Buckfire  
Gayle & Andrew Camden  
Judy & Chuck Domstein  
Jacqui & Larry Elkus  
Harold Friedman  
Margot & Herbert Gardner  
Susan & Larry Gormezano  
Charles Greenberg  
Sharon & Dr. Martin Hart  
Franklin Horowitz  
Diane Landay  
Anita Levin  
Lynne & Jerold Levine  
Sally Jo & H. Barry Levine  
Judy & John Marx  
Victor Norris  
Linda & Allan Ross  
Cindy & Melvin Schwartz  
Anne & Steven Weiner  
Rabbis of Temple Israel

## MEMBERS

Nina Dodge & Howard Abrams  
Margot Abramson  
Joanna & Jay Abramson  
Sharyl & Alan Ackerman  
Karen & Eric Adelman  
Carter Agree  
Rick Agree  
Elaine & Harvey Aidem  
Benjamin Anchill  
Doris & James August  
Miriam Ballin  
Carolle Baskin  
Marcia & Martin Baum  
Joseph Bernstein  
William Berry  
Elliott Bettman  
Paula & Edwin Bladen  
Susie & Robert Bluestein  
Karen Bolak  
Carolyn Borman  
Keith Braun  
Sharon & Barry Breidenbaugh  
Penny & Harvey Brode  
Vicky Buckfire  
Joel Bussel  
Adian Christie  
Barbara Coden  
David Fertel & Jill Cohen  
Beth & David Contorer  
Lynn & Scott Cooper  
Douglas Davis  
Wendy & Lloyd Doigan  
Sally Dovitz  
Terri & Dr. Michael Dworkin  
Rabbi Dorit & Shimon Edut

Janice Eisman  
Ron Elkus  
Estelle & Phil L. Elkus  
Gayle Ellias  
David Elsila  
Nancy Epstein  
Barbara Eskin  
Fern Ettinger  
Rita Faudman  
Shirley & Dr. Paul Feinberg  
Arthur Fine  
Dorene & Alan Finer  
Bertha Fink  
Laurie & Bruce Fisher  
Gail & Steven Fisher  
Sam Frank  
Marion & Michael Freedman  
Sheldon Freilich  
Matt Friedman  
Rochelle Friedman  
Paul Friedman  
Andrea Gallucci  
Bernice Garon  
Ellie Glen  
Thea & Elliot Glicksman  
Eileen & Bill Glogower  
Marianne & Dr. Edward Goldberg  
Margo Pernick & Dr. Paul Goldslack  
Selma Goode  
Kenneth Goodman  
Marilyn Gordon  
Arline & Paul Gould  
Lois & Hadar Granader  
Diane & Daniel Greenberg  
Barbara Gross

Judith Grossman  
Renee Gruskin  
Herbert Gubow  
Elizabeth & Dana Gulick  
Larry Gunsberg  
Sandra & Leonard Gutman  
Barbara & Stephen Gutman  
Dr. Sharon Lee Havis  
Florence Herrmann  
Noemi Herzig  
Fran & Tom Hildebrandt  
Helene & Art Indianer  
Nicole & Herbie Jahr  
Ruth Kahn  
Joshua & Tanya Kannon  
Sharon & Alan Kaplan  
Susan & Allan Katz  
Carol Kent  
Jason Klein  
Dr. Daniel Klein  
Sharon & Jerry Knoppow  
Zieva & Marc Konvisser  
Cindy & Gordon Krainen  
Sheila & Martin Kurland  
Ruby & Richard Kushner  
Natalie & Glenn Lapin  
Bylaina & Bob Lavine  
Linda & Kenneth Lenchner  
Jonathan Levin  
Marjorie & Arthur Levine  
Feannie Lieberman  
Ed Malkin  
Gail Mayer  
Marilyn Madorsky & Robert McClain  
Amanda McGauley

Rosalyn & Lance Mermell  
Laura Miller  
Paula & Norman Miller  
Marsha & Neil Millman  
Ella Modell  
Marla & Andrew Moiseev  
Cyril Moscow  
Gabe Neistein  
Erik Nordberg  
Joann Nosan  
Pamela S. Ovshinsky  
Martin Pasternak  
Susan & Edwin Pear  
Esther & Erwin Posner  
Karen & Hazzen David Propis  
Michael Pyciak  
Nancy & Cecil Raitt  
Reva & Robert Rosen  
Iris Rosen  
Susan & Richard Roth  
Tony Rothschild  
Harriet & Norman Rotter  
Beatrice Rowe  
Jerry Rubin  
Susan & Herb Ruttenberg  
Doreen & Nison Sabin  
Diane & Al Sasson  
Rosie & Mark Schlusell  
Barbara Schuster  
Sharon & Bennett Schwartz  
Andrew, Robert & Abby Segal  
Michelle & Jerome Seid  
Joel Sharkey  
Avreham Shenkman  
Sandra Shepherd

William & Rabbi Marion Shulevitz  
Ruth Siegal  
Ronna & Rick Silveman  
Mary Ann & Ted Simon  
Mark Slobin  
Lawrence Steel  
Debra Golden Steinman  
& Harold Steinman  
David Stern  
Michelle Stiebel Stephens  
Richard Strausz  
Warren Tessler  
Carol Tower  
Sara Voight  
Rabbi Dr. Mordichai Waldman  
Gwendolyn Walker  
Prof. Kenneth Waltzer  
Ann Wanetik  
Rochelle & Dr. Frederick  
Wassermann  
Miriam & Harry Weberman  
Cindy & Mark Weingarten  
Melissa & Brian Weisberger  
Lenore Weiss  
Ilene Weiss  
Trudi & Henry Wineman II  
Carol & Larry Wittenberg  
Louis Yonke  
Brenda Zales  
Greta & Marvin Zalman  
Gene Zamlar  
Shifra & Jack Zwick

*From April 14, 2014 through  
May 15, 2015*

THE JEWISH HISTORICAL SOCIETY OF MICHIGAN MAKES EVERY ATTEMPT TO ACCOUNT ACCURATELY  
FOR ALL FINANCIAL CONTRIBUTIONS. IF YOUR NAME DOES NOT APPEAR ABOVE OR IS INCORRECT,  
WE APOLOGIZE AND ASK THAT YOU CONTACT OUR OFFICE TO CORRECT THE ERROR.

# JHSM

---

## TRIBUTES

---

RUTH ADLER SCHNEE

**On being named the 2015 Kresge Eminent Artist** from Aimee Ergas & Tor Shwayder; Judy & Bernie Cantor; JHSM Officers & Board

BEVERLY BAKER

**On your being honored by JTS** from JHSM Officers & Board

HARRIET BERG

**On your 90th Birthday** from Aimee Ergas & Tor Shwayder; JHSM Officers & Board

MADELEINE BERMAN

**On receiving the Americans For the Arts National Legacy Award** from Judy & Bernie Cantor; JHSM Officers & Board

MANDELL BERMAN

**On the dedication of The Mandell Berman Center for Education** from Judy & Bernie Cantor

EMILY BICE

**On your high school graduation** from Wendy & Gary Bice; JHSM Officers & Board

ROZ BLANCK

**On your presidency of Women's Philanthropy** from Wendy & Gary Bice

HARVEY BRONSTEIN

**On receiving the Jewish Federation of Metropolitan Detroit Lifetime Achievement Award** from Jacqui & Larry Elkus; JHSM Officers & Board

ROBERT A. BRUTELL

**On being named the 2015 World Sabbath Peacemaker awardee at the 16th Annual World Sabbath of Religious Reconciliation** from Barbara & Jerry Cook

JUDY CANTOR

**On your birthday** from Inge Eriks & Glenn Cantor

SUSIE CITRIN

**On receiving JFMD's 2014 Lifetime Achievement Award** from JHSM Officers & Board

RAY CLEMENT

**On Beth Isaac hosting JHSM and your speaking** from Barbara & Jerry Cook

JUDGE AVERN COHN

**On your being named an Eight Over Eighty Honoree** from Wendy & Gary Bice; JHSM Officers & Board

JUDGE AVERN COHN

**On your special birthday** from Wendy & Gary Bice

BILL COHODAS

**On your extra special birthday** from JHSM Officers & Board

LOIS COHODAS

**On your special birthday** from JHSM Officers & Board

DOROTHY & ARNIE COLLENS

**On the Bar Mitzvah of your grandson, Max Collens** from JHSM Officers & Board

JERRY COOK

**On your presidency of JHSM** from Wendy & Gary Bice

LAUREN & MARVIN DAITCH

**On receiving the Juvenile Diabetes Research Foundation Award** from Judy & Bernie Cantor

DR. CHARLES DOMSTEIN

**On your 75th Birthday** from JHSM Officers & Board

NORMA & MICHAEL DORMAN

**On your being honored by JTS** from JHSM Officers & Board

EUGENE DRIKER

**On receiving the 2015 Art Advocacy Award** from Wayne State University, College of Fine, Performing and Communications Arts from JHSM Officers & Board

JACQUI & LARRY ELKUS

**On the recent marriage of your son, Bryan, to Melissa Ardery** from JHSM Officers & Board

IRWIN ELSON

**On receiving JFMD's 2014 Lifetime Achievement Award** from JHSM Officers & Board

HAUSER FAMILY

**To Mark, on receipt of a kidney from your daughter, the kidney donor** from Barbara & Jerry Cook

DR. PAUL FEINBERG

**On your being named an Eight Over Eighty honoree** from JHSM Officers & Board

SUSAN & TED FRIEDMAN

**On your being honored by Congregation Beth Shalom** from JHSM Officers & Board

MR. & MRS. MARK GEOFFREY

**On the marriage of your son** from Jacqui & Larry Elkus

DAVID GEORGE

**On receiving the Four Chaplains Award** from JHSM Officers & Board

JUDY & DAVID GOLDIS

**On your 50th Anniversary** from JHSM Officers & Board

AMY & DAVID GOLDMAN

**On the Bat Mitzvah of your daughter, Eva Rose Goldman** from JHSM Officers & Board

EVA GOLDMAN	<b>On your Bat Mitzvah and your initiative to honor the souls of the 1300 people buried at B'nai David Cemetery</b> <i>from Barbara &amp; Jerry Cook</i>
RUTHE GOLDSTEIN	<b>On the birth of your great-granddaughter Hazel</b> <i>from JHSM Officers &amp; Board</i>
DR. PAUL GOODMAN	<b>On your 80th Birthday</b> <i>from Barbara &amp; Jerry Cook; JHSM Officers &amp; Board</i>
MARLA ROWE & NEIL GOROSH	<b>On the marriage of your son, Loren Gorosh to Nathalia Sciotto</b> <i>from JHSM Officers &amp; Board</i>
JIM GREY	<b>THANK YOU!</b> <i>from Marty Hollender</i>
MARGOT HALPERIN	<b>On receiving the Jewish Federation of Metropolitan Detroit Lifetime Achievement Award</b> <i>from JHSM Officers &amp; Board</i>
TOM HILDEBRANDT	<b>On your good health</b> <i>from JHSM Officers &amp; Board</i>
CINDY HUGHEY	<b>On receiving the JFMD's Jewish Professional Award</b> <i>from Judy &amp; Bernie Cantor</i>
MARGERY JABLIN	<b>On the birth of your grandson, Joel Ari</b> <i>from JHSM Officers &amp; Board</i>
DR. JAMES A. JONES	<b>On your 90th Birthday</b> <i>from JHSM Officers &amp; Board</i>
LIZ, LES, AND ANDREA KANNON	<b>On being named the JHSM Volunteers of the Year</b> <i>from Wendy &amp; Gary Bice; Susan &amp; Barry Gross; Sheila &amp; Michael Levine; Wendy Robin; Laura Trosch</i>
ROBERT KAPLOW	<b>To thank you for your fine work on the JHSM By-Laws and as Nominating Committee Chair</b> <i>from Barbara &amp; Jerry Cook</i>
MARILYN KRAINEN	<b>On a speedy recovery</b> <i>from Dorothy &amp; Arnie Collens; JHSM Officers &amp; Board</i>
MARILYN KRAINEN	<b>In honor of you, a loving, righteous, exemplary woman</b> <i>from Karen Rosenstein</i>
ELLEN LABES	<b>On receiving the Eight over Eighty Award</b> <i>from JHSM Officers &amp; Board</i>
SISSI LAPIDES	<b>On receiving the Eight over Eighty Award</b> <i>from Judy &amp; Bernie Cantor</i>
MYRLE LELAND	<b>On a speedy recovery</b> <i>from JHSM Officers &amp; Board</i>
RICHARD LELAND	<b>On a speedy recovery</b> <i>from Dorothy &amp; Arnie Collens; JHSM Officers &amp; Board</i>
ANDREW LEVIN	<b>On a speedy recovery</b> <i>from JHSM Officers &amp; Board</i>
BOBBIE & JOE LEWIS	<b>On being honored by JTS</b> <i>from JHSM Officers &amp; Board</i>
BOBBIE & JOE LEWIS	<b>On the birth of your granddaughter</b> <i>from JHSM Officers &amp; Board</i>
CAROL LIPSITT	<b>On a speedy recovery</b> <i>from JHSM Officers &amp; Board</i>
LISA LIS	<b>On your presidency of Women's Philanthropy</b> <i>from Wendy &amp; Gary Bice</i>
DONNA MADDIN	<b>On your speedy recovery</b> <i>from JHSM Officers &amp; Board</i>
MICHAEL MADDIN	<b>Mazel Tov on all your contributions to JHSM</b> <i>from Lindsey, Marty, Brody, &amp; Lainey Maddin</i>
DANIEL LOVING MARTIN	<b>On hosting JHSM bus tour at Clinton Street Greater Bethlehem Church</b> <i>from Barbara &amp; Jerry Cook</i>
EARL REMER	<b>On receiving the 2014 Eight over Eighty Award</b> <i>from Judy &amp; Bernie Cantor</i>
RISHA RING	<b>On a speedy recovery</b> <i>from JHSM Officers &amp; Board</i>
MARJORIE SAULSON	<b>On being named Congregation Shaarey Zedek Woman of Valor</b> <i>from JHSM Officers &amp; Board</i>
MICHELE & ELI SAULSON	<b>On the birth of your daughter, Fara Naomi</b> <i>from JHSM Officers &amp; Board</i>
LOIS & MARK SHAEVSKY	<b>On your 50th Anniversary</b> <i>from Barbara &amp; Jerry Cook</i>
AIMEE ERGAS & TOR SHWAYDER	<b>On the birth of your grandson, Oberon Samson Klekowski-Shwayder</b> <i>from Wendy &amp; Gary Bice; Barbara &amp; Jerry Cook; JHSM Officers &amp; Board</i>
HARRIET SIDEN	<b>On a speedy recovery and good health</b> <i>from JHSM Officers &amp; Board</i>
HARRIET SIDEN	<b>In your honor</b> <i>from Helgard &amp; Seymour Field</i>
RUBY SIMONS	<b>On your birthday</b> <i>from Mary Lou Zieve</i>
ADELE STALLER	<b>On your special birthday</b> <i>from JHSM Officers &amp; Board</i>
BERT STEIN	<b>On receiving the Eight over Eighty Award</b> <i>from JHSM Officers &amp; Board</i>
DR. SIDNEY STONE	<b>On receiving the Eight over Eighty Award</b> <i>from Judy &amp; Bernie Cantor</i>
PROF. KENNETH WALTZER	<b>On your retirement</b> <i>from Wendy &amp; Gary Bice; JHSM Officers &amp; Board</i>
KAREN & JERRY WEINER	<b>On your 50th anniversary</b> <i>from Annette Friedman</i>
DR. GLENN WEISFELD	<b>On your good health</b> <i>from JHSM Officers &amp; Board</i>

# In Memoriam.

WE FONDLY REMEMBER...

**JEFFREY ADELMAN**  
*from Barbara & Jerry Cook*

**RHODA ALBOM**  
*from Barbara & Jerry Cook*

**ZYGIE ALLWEISS**  
*from Wendy & Gary Bice*  
Barbara & Jerry Cook  
JHSM Officers & Board

**DEBORAH FEINGOLD ARONSSON**  
*from Judy & Bernie Cantor*  
Barbara & Jerry Cook

**LAWRENCE ASHLEY**  
*from JHSM Officers & Board*

**ROBERT BENJAMIN**  
*from Wendy & Gary Bice*

**DR. CHARLES BENJAMIN**  
*from Jacqui, Larry & Lauren Elkus*

**ROBERT BENYAS**  
*from Wendy & Gary Bice*  
Jeff Borin  
Judy & Bernie Cantor  
Barbara & Jerry Cook  
Ruth & Jim Grey  
Myrle & Richard Leland  
Aimee Ergas & Tor Shwayder  
JHSM Officers & Board

**JOE BERMAN**  
*from Jim Bramson*  
Ellen & Michael Cole  
Julie Zalla

**MINNIE BERMAN**  
*from JHSM Officers & Board*

**JACK BODZIN**  
*from JHSM Officers & Board*

**JOSHUA BURSTYN**  
*from Wendy & Gary Bice*

**DR. JOANN CHALAT**  
*from Judy & Bernard Cantor*  
JHSM Officers & Board

**MICHAEL COLE**  
*from Linda Albert & Family*  
Kim Davis Bernzweig  
James Bramson  
Judy & Bernie Cantor  
Dorothy & Arnold Collens  
Barbara & Jerry Cook  
Bev & Joe Corbiel  
Charlotte Dubin  
Rachel, Jason, Shira, Ari & Noam Ellis  
Dorothy Goldstick  
Ruth & Jim Grey  
Irina Izikson  
Susan Kamin  
Lois & Rob Kaplow  
Jacqueline DeYoung & Michael Kasky  
C. Michael Kojaian  
Myrle & Richard Leland  
Judi & John Marcosky  
Edie & Donn Resnick  
Roberta Russ  
Doris & David Schey  
Sheri & Charles Schiff  
Sue & Burton Shifman  
Aimee Ergas & Tor Shwayder  
Harriet Siden  
Jennifer & Paul Silverman  
Jane Stearns  
Sharon & Joel Wittenberg  
Julie Zalla  
Deborah & Tom Williams  
JHSM Officers & Board

**DOROTHY CONRAD**  
*from JHSM Officers & Board*

**CLARA COOK**  
*from Barbara & Jerry Cook*

**JEANETTE COOK**  
*from Judith & Bernie Cantor*  
Ellen & Michael Cole  
Dorothy & Arnold Collens  
Jacqui & Larry Elkus  
Ruth & Jim Grey  
Liz & Les Kannon  
Jacqueline DeYoung & Michael Kasky  
Marilyn & Fred Krainen  
Myrle & Richard Leland  
Stanley Meretsky  
Edie & Donn Resnick

Sue & Burt Shifman  
Sheri & Charles Schiff  
Aimee Ergas & Tor Shwayder  
Harriet Siden  
Diane & Mark Voight  
JHSM Officers & Board

**MARTIN DASH**  
*from JHSM Officers & Board*

**RONALD DAVIDOFF**  
*from Barbara & Jerry Cook*  
JHSM Officers & Board

**GOLDIE FOGELMAN**  
*from JHSM Officers & Board*

**PHYLLIS FRIEDMAN**  
*from Barbara & Jerry Cook*  
Ruth & Jim Grey  
JHSM Officers & Board

**ADELE GAINES**  
*from Jeremy, Sara, Giliah and Eliana Adler*  
JHSM Officers & Board

**PEARL GOODMAN**  
*from Barbara & Jerry Cook*

**MARVIN GROSS**  
*from JHSM Officers & Board*

**SHIRLEE IDEN**  
*from JHSM Officers & Board*

**MARTY JACOB**  
*from Judy & Bernie Cantor*  
JHSM Officers & Board

**RACHEL JACOBS**  
*from Barbara & Jerry Cook*

**IRVING JAFFEE**  
*from JHSM Officers & Board*

**KOPEL KAHN**  
*from JHSM Officers & Board*

**DAVID LEBENBOM**  
*from JHSM Officers & Board*



**BENNO LEVI**

*from Wendy & Gary Bice  
Barbara & Jerry Cook  
Ruth & Jim Grey  
Aimee Ergas & Tor Shwayder  
JHSM Officers & Board*

**RUTH LEVI**

*from JHSM Officers & Board*

**EVELYN LEVINE**

*from Liz & Les Kannon*

**KENNETH LIPSITT**

*from JHSM Officers & Board*

**"RAY" RACHEL MAISEL**

*from Judy & Bernie Cantor*

**SARA LILA MANSON**

*from Judy & Bernard Cantor  
Ellen & Michael Cole  
Dorothy & Arnold Collens  
Judy & Chuck Domstein  
Charlotte Dubin  
Ruth & Jim Grey  
Liz & Les Kannon  
Jacqueline DeYoung-Kasky & Mike Kasky  
Suzanne & Burton Shifman  
Aimee Ergas & Tor Shwayder  
Harriet Siden  
Adele Staller  
JHSM Officers & Board*

**THIRMAN MARCEL**

*from JHSM Officers & Board*

**JOHN MAYER**

*from Judy & Bernard Cantor*

**JEROME MAYER**

*from JHSM Officers & Board*

**LEONARD MENDELSON**

*from Judy & Bernie Cantor*

**EDNA MINKIN**

*from JHSM Officers & Board*

**RICHARD MONASH**

*from Barbara & Jerry Cook*

**MY SISTERS -**

**MARILYN ROSENTHAL,  
ADELINE SIROTA &  
LILLIAN WARATT**  
*from Harriet Berg*

**STEVE NADELBERG**

*from Wendy & Gary Bice*

**DOROTHY NEWMAN**

*from Barbara & Jerry Cook  
JHSM Officers & Board*

**EVELYN NOVECK**

*from Judy & Bernard Cantor  
Dorothy & Arnold Collens  
Ruth & Jim Grey  
Liz & Les Kannon  
Stanley Meretsky  
Adele Staller  
JHSM Officers & Board*

**CANTOR HAROLD ORBACH**

*from Ellen & Michael Cole  
JHSM Officers & Board*

**HOWARD PACKMAN**

*from Wendy & Gary Bice*

**DAVID K. PAGE**

*from Judy & Bernard Cantor  
Barbara & Jerry Cook  
JHSM Officers & Board*

**SOL PANUSH**

*from Judy & Bernie Cantor*

**ROGER PERSIN**

*from JHSM Officers & Board*

**DR. IRWIN PHILLIPS**

*from JHSM Officers & Board*

**JULIA AISENSTADT PYCIAK**

*from Michael Pyciak*

**JANET KARP RECHT**

*from Wendy & Gary Bice;  
JHSM Officers & Board*

**NORMAN ROSENFELD**

*from Judy & Bernie Cantor  
JHSM Officers & Board*

**NEAL ROTT**

*from JHSM Officers & Board*

**JEROME SCHOSTAK**

*from Judy & Bernie Cantor*

**ARTHUR SCHOTT**

*from JHSM Officers & Board*

**IRIS SHAPIRO**

*from JHSM Officers & Board*

**PAUL SHERIZEN**

*from Judy & Bernard Cantor*

**HOWARD SHERIZEN**

*from JHSM Officers & Board*

**HERMAN SHERLINE**

*from JHSM Officers & Board*

**MARION SHLOM**

*from JHSM Officers & Board*

**JUDITH & NORVAL SLOBIN**

*from Mark Slobin*

**BEVERLY SMITH**

*from Paula & Kim Sigworth*

**LEANNA SMITH**

*from Dorothy & Arnold Collens  
Jacqui & Larry Elkus  
Marilyn & Fred Krainen  
Aimee Ergas & Tor Shwayder  
Jeannie Weiner*

**JEROME SONENKLAR**

*from Judy & Bernie Cantor*

**GERALD STRAUSS**

*from Wendy & Gary Bice*

**LAWRENCE SUKENIC**

*from Barbara & Jerry Cook  
JHSM Officers & Board*

**A. ALFRED TAUBMAN**

*from Barbara & Jerry Cook  
Edie & Donn Resnick  
JHSM Officers & Board*

**SAMUEL TAYLOR**

*from Liz & Les Kannon*

**DR. CHARLES TENNER**

*from JHSM Officers & Board*

**LOU WEINSTEIN**

*from Elizabeth Zerwehk & Jack Lessenberry*

**JEAN WIENER**

*from JHSM Officers & Board*

**JOEL WIENER**

*from JHSM Officers & Board*

# The A. Alfred Taubman Heritage Council

AN ENDOWMENT FUND TO ENSURE THE FUTURE OF THE  
JEWISH HISTORICAL SOCIETY OF MICHIGAN IN THE 21<sup>st</sup> CENTURY

## GUARDIAN – \$100,000

The Eugene Applebaum Family Foundation  
William Davidson Foundation  
Guardian Industries Corp.,  
Chairman William M. Davidson\*  
A. Alfred Taubman\*

## TRUSTEES – \$25,000

Mandell L. and Madeleine H. Berman Foundation  
Barbara and Gerald Cook  
Max M. Fisher Jewish Community Foundation  
Stephen, Nancy, and Sam\* Grand  
James and Nancy Grosfeld Foundation

## CHANCELLORS – \$10,000

Natalie and Manny Charach  
DeRoy Testamentary Foundation  
Hermelin/Davidson Center for  
Congregation Excellence  
Jewish Women's Foundation  
Marjorie and Maxwell Jospey Foundation  
Benard L. Maas Foundation  
Meyer and Anna Prentis Family Foundation–  
Trustees: Denise L. Brown, Ronald P. Frankel,  
Marvin Frenkel, Dale P. Frenkel, Cindy P. Frenkel,  
Nelson P. Lande, Ricki Farber Zitner,  
Maradith Frenkel, Warren Frenkel, Max Frenkel

## DEANS – \$5,000+

Louis C. and Edith B. Blumberg Foundation–  
Alene and Graham Landau  
Rhea and Robert Brody  
Judith and Bernard Cantor  
Lois P. and Hon. Avern Cohn  
Stanley and Judith Frankel Foundation  
Rita and John\* Haddow  
Hermelin Family Support Foundation–  
Doreen Hermelin  
Mark-Lis Philanthropic Fund–  
Lisa and Hannan Lis, Florine Mark,  
David Mark, Jeff Mark, Richard Mark  
Marcia and Marc D. Manson  
Ann and Rudolph\* Newman  
Esther and Seymour Padnos Fund  
of the Community Foundation  
of the Holland/Zeeland Area  
Morris and Emma Schaver Foundation–  
Dr. Isaac Schaver  
Phyllis and Stephen Strome

## FELLOWS – 1,000+

Anonymous  
Mary and Jonathan Aaron  
Norman Allan\*  
Harriet and Dr. Bryce Alpern\*

Herbert A. Aronsson  
Sylvia Babcock  
Morris and Beverly Baker Foundation  
Renah\* and Dr. Max Bardenstein  
Harriet and Irving\* Berg  
Barbara and Harold Berry  
Wendy Rose and Gary M. Bice  
Marlene and Paul Borman  
James Bramson and Amy Potozkin  
The Eli and Edythe Broad Foundation  
Margie and Allen Charnes  
Ellen and Michael Cole  
Dorothy and Arnold Collens  
Joseph Colten\*  
Ann and David L. Conrad  
Betty and Marvin I. Danto\*  
David-Horodoker Orgainzation  
Gretchen and Ethan Davidson  
Detroit Central High School  
Class of January 1952  
Elaine C. and Eugene Driker  
Aimee Ergas and Tor Shwayder  
Robert M. Feldman  
Dede and Oscar Feldman  
Lea and Walter Field\*  
Jean and Samuel Frankel\*  
Lois and Harvey Freeman  
Rozanne and Judge Bernard Friedman  
Ralph Gerson  
Norma and Dr. Bernard Goldman\*  
Barbara and Dr. Paul Goodman  
Goodwill Printing Company  
Ruth and James D. Grey  
Neal L. Grossman and Estelle Wallace  
Doreen N. Hermelin Trust  
Eleanor and Lawrence Jackier  
M. Jacob and Sons  
Joan and Dr. Robert Jampel  
Kaufman Memorial Trust  
Stephen M. Modell Philanthropic Fund  
Morris-Phillips Philanthropic Fund  
Sally and Graham Orley  
Patrice and Dr. Eric Phillips  
Prentis Family Support Foundation  
Claire and Gordon Prussian  
Reconstructionist Congregation of Detroit  
Edith and Donn Resnick  
Aviva and Jack A. Robinson  
Dulcie and Norman Rosenfeld  
Fritzi Roth  
Michele and Eli Saulson  
Marjorie and Saul Saulson  
Bette\* and Herbert O. Schein  
Sandra Seligman  
Roz Sell

Elaine and Michael Serling  
Suzanne and Burton Shifman  
Harriet and Franklin\* Siden  
Debra C. Silver-Heller  
Leonard N. Simons\*  
Etta Solway\*  
Harvey Strosberg  
Mary and George N. Stutz\*  
Jeannie and Dr. Gershon\* Weiner  
Karen J. and Marshall Weingarden  
The Melba and Sidney Winer Memorial Fund –  
Melba and Sidney Winer\*, Susan Winer,  
Harry S. Winer, Jan L. Winer, Esther S.  
and Marvin F. Mintz  
Beryl and Isadore Winkelman\*  
Michelle and Michael Zeid  
Mary Lou and Morton\* Zieve

## COLLECTORS – \$500+

Gloria and Gerald Abrams  
Sharon and Michael Alterman  
Helen S. August\*  
Shirley and Robert\* Benyas  
Ruth Sugar Beresh  
Jule Berman\*  
Barbara and Douglas Bloom  
Richard C. Blumenstein  
Matilda J. Brandwine\*  
Joan Braun  
Denise Brown  
Susan and Robert M. Citrin  
Joann and Dr. Charles Clayman  
Lauren and Marvin C. Daitch  
Cathy and Jim Deutchman  
Judith & Dr. Charles Domstein  
Lucille and Hiram\* Dorfman  
Charlotte Dubin  
Helgard and Irwin Field  
Jean and Dr. Sidney\* Fine  
Marjorie and Max\* Fisher  
Peggy and Dennis Frank  
Marla and Neil Gorosh  
Sheila Guyer  
Charlene Handleman  
Margery Jablin  
Joel Jacob  
Rodney Jewett  
Carol and Alan\* Kandel  
Elizabeth and Leslie Kannon  
Fern S. Katz  
Dorothy and Harold Kaufman\*  
Rose Kaye\*  
Rayna and Natalio Kogan  
C. Michael Kojaian  
Seth A. Korelitz

Susan and Rabbi Joseph Krakoff  
Myrle and Richard Leland  
Rita and Dr. Stanley Levy  
Donna and Michael Maddin  
Gloria and Edward Meer  
Stanley Meretsky  
Dana and Josh Mermell  
Shirley and Morris Mersky\*  
Mark Milgrom  
Joy and Allan Nachman  
Professor Harold Norris\*  
Rosalie and Abraham Raimi\*  
Dr. Wendy Sadoff  
Joni and Neil Satovsky  
Marianne and Alan E. Schwartz  
Dr. Oscar Schwartz  
Kathleen Straus and Hon. Walter Shapero  
Esther and Dr. Peter Shifrin  
Marjorie Hecht and Erwin S.\* Simon  
Marianne and Sidney Simon  
Dr. Linda Sircus  
Janice Sobel  
Sydelle and Dr. Sheldon\* Sonkin  
Robert S. Steinberg Estate  
Gerald Sukenic  
The Office Connection – Joseph Minc  
Arlene and Steven Victor\*  
Carol and Glenn Weisfeld  
Elizabeth Weiss  
Milton and Lois Zussman

## JOSHUA SOCIETY LEGACY FUND (2011-2012)

Judy and Bernard Cantor  
Charlotte Dubin  
Dr. H. Harvey Gass\*  
Norma Goldman\*  
Stanley Meretsky  
Debra C. Silver

*\*Of Blessed Memory*

*As of May 12, 2015*

THE JEWISH HISTORICAL SOCIETY OF MICHIGAN MAKES EVERY ATTEMPT TO ACCOUNT ACCURATELY FOR ALL FINANCIAL CONTRIBUTIONS. IF YOUR NAME DOES NOT APPEAR ABOVE OR IS INCORRECT, WE APOLOGIZE AND ASK THAT YOU CONTACT OUR OFFICE TO CORRECT THE ERROR.

President's Report, continued from page 4

summer. The plan focuses on ensuring our long-term financial stability, developing leadership, and building an organization that serves all of Jewish Michigan by continuing to honor our mission: to gather, share, and celebrate Michigan's Jewish history.

Our future will be even brighter as more members get involved with JHSM. Consider volunteering for us (we'll train you), participate in or host a tour or intimate program at your home, donate a yearbook, make an additional monetary contribution, or think of us in your estate plan. Membership to JHSM is \$36. Tell your friends about us, or better yet, give them the gift of JHSM membership.

Congratulations to our Volunteers of the Year, Liz, Les, and Andrea Kannon, who exemplify the spirit of volunteerism. Congratulations to former U.S. Senator Carl Levin, the recipient of our prestigious Leonard N. Simons History Award. His commitment to preserving our Jewish stories would have made the late Leonard Simons proud.

It has been an honor to work closely with so many

JHSM volunteers and board members. Especially meaningful has been the contact with our active delegation of past presidents. I am continually humbled by this group who eagerly provide their wisdom and assistance. I also wish to thank the officers and board, and the advisory committee, for all their support. The outstanding staff – executive director Wendy Rose Bice, education director Nicole Jahr, and administrative assistant Liz Kannon – have made my job much smoother and easier.

To Donna, my wife of almost 49 years, thank you for your love and support, and for not complaining too loudly about my taking on yet another non-profit, high-paying job! Most importantly, thank you to the JHSM members, volunteers, and friends, whose happy faces and great comments about JHSM's work and mission have made these past twelve months a true blessing.

*"Enjoy life, it has an expiration date!"* Nothing could be truer than this sentiment: and it is the philosophy we follow when planning our events, programs, and tours. Join our work and I promise you fun, interesting, and fulfilling times.

# HOW TO SUPPORT JHSM

**DONATE:** Add to your annual contribution or become a Heritage Council member. Heritage Council members are life members of JHSM and receive all membership benefits plus special recognition and an invitation to our annual Heritage Council Donor event. Heritage Council donations are cumulative. **MEMBERSHIP:** Give a gift of membership to a friend or family member. **TRIBUTE:** Commemorate a milestone or send a special note of remembrance. **BEQUEST:** Remember JHSM in your estate planning. Donate your yearbooks to JHSM's Yearbook Collection. **PURCHASE:** Order your copy of *Michigan Women Who Made A Difference*. **VOLUNTEER:** Help us grow and serve our communities. Host an event, docent, research or write for us.

All donations, contributions and purchases can be made by visiting our website ([www.michjewishhistory.org](http://www.michjewishhistory.org)), calling our office, 248-432-5517, or by mailing this form with a check payable to JHSM. Mail to 6600 W. Maple Rd., West Bloomfield, MI 48322

Name _____ Email _____ Phone _____ Address _____ City _____ State _____ Zip _____	_____ A donation of \$ _____ _____ Join the Heritage Council with a gift of \$500 and above \$ _____ _____ I'd like to be contacted regarding a planned gift to JHSM _____ A \$36 gift of membership for: (NAME, ADDRESS) _____ _____ _____ <i>Michigan Women Who Made a Difference</i> (\$25 plus shipping) _____ Please contact me. I'd like to get involved and volunteer. <b>TOTAL: \$</b> _____
--	---

2014-2015  
JHSM OFFICERS & DIRECTORS

Michael W. Maddin, President  
Gerald S. Cook, Immediate Past President  
Jennifer Boardman, Vice President  
Michael Kasky, Vice President  
Jeannie Weiner, Vice President  
Jules Goldman, Treasurer  
Ruthe Goldstein, Secretary

Charles Domstein  
Jacqueline Elkus  
Jules Goldman  
Ruthe Goldstein  
Neil Gorosh  
Margery J. Jablin  
Andrew Levin  
Michael W. Maddin  
Sheri Schiff  
Harriet Siden  
Carol Weisfeld

2014-2015  
JHSM ADVISORY BOARD MEMBERS

Sharon Alterman  
Laurie Blume  
Harvey S. Bronstein  
Michael Brooks  
Denise Brown  
Barbara Cohn  
Ann J. Conrad  
Charlotte Dubin  
Jan Durecki  
Dennis Frank  
Lois Freeman  
Joy Gaines-Friedler  
Dr. Paul Goodman  
Marilyn Krainon  
Myrle Leland  
Richard Leland  
Benno Levi\*  
Hannan Lis  
Prof. Howard Lupovitch  
Susan Low  
Marc D. Manson  
Allan Nachman  
Susan Pappas  
Edie L. Resnick  
Suzanne Shifman  
Sidney Simon  
Janice Sobel  
Pam Sofferin  
Prof. Kenneth Waltzer  
Rabbi Herbert Yoskowitz  
Mary Lou Zieve

PAST PRESIDENTS OF JHSM

Arnold Collens  
Ellen S. Cole  
Robert D. Kaplow  
Joan R. Braun  
James D. Grey  
Judith Levin Cantor  
Gilbert Borman  
Adele W. Staller  
Evelyn Noveck\*  
Stanley N. Meretsky  
Bette A. Roth Young  
Phillip Applebaum  
Jeffrey N. Borin  
Doris P. Easton  
Dr. Henry Green\*  
Dr. Abraham S. Rogoff\*  
Dr. Irving I. Edgar\*  
Emanuel Applebaum  
Irving I. Katz\*  
Allen A. Warsen\*

*\*of Blessed Memory*

ADMINISTRATIVE STAFF

Wendy Rose Bice, *Executive Director*  
Aimee Ergas, *Research Director*  
Nicole Jahr, *Education Director*  
Elizabeth Kannon, *Administrative Assistant*

JHSM  
LEADERSHIP



6600 WEST MAPLE RD.  
WEST BLOOMFIELD, MI 48322  
*Address Service Requested*

Non-Profit Org.  
U.S. Postage  
**PAID**  
Southfield, MI  
Permit No. 174